

FAST BREAK

POINT 1 -

POINT 2 -

1/2 COURT OFFENSE

POINT 1 -

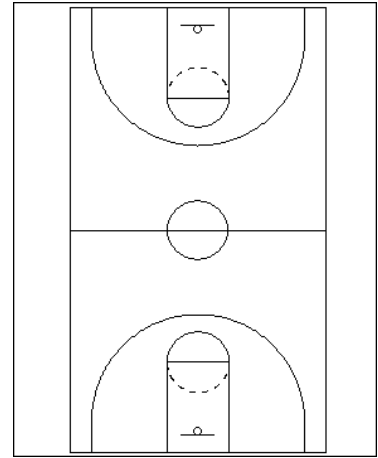
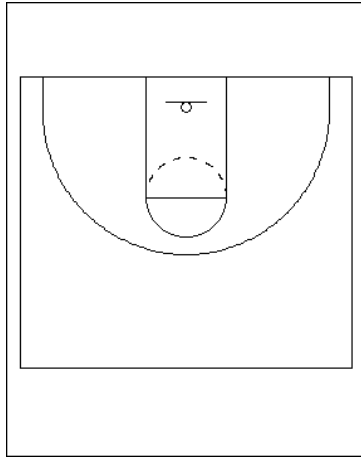
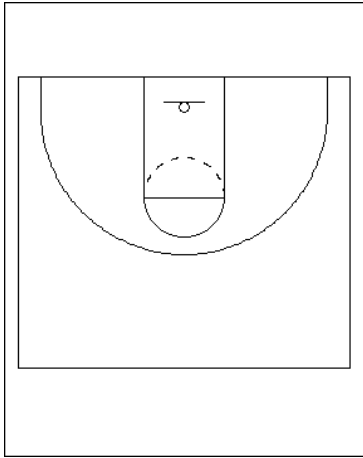
POINT 2 -

FULL COURT DEFENSE

POINT 1 -

POINT 2 -

OPPOSITION'S TEAM STRUCTURE



1/2 COURT DEFENSE

DEF STRATEGY 1 -

DEF STRATEGY 2 -

POINT 1 -

POINT 2 -

KEYS TO VICTORY

POINT 1 -

POINT 2

POINT 3-
